



# Hilliard® Brake Model:

# A400-T400 HS

## Technical Data Sheet



## Hydraulically Applied, Spring Released Caliper Brakes

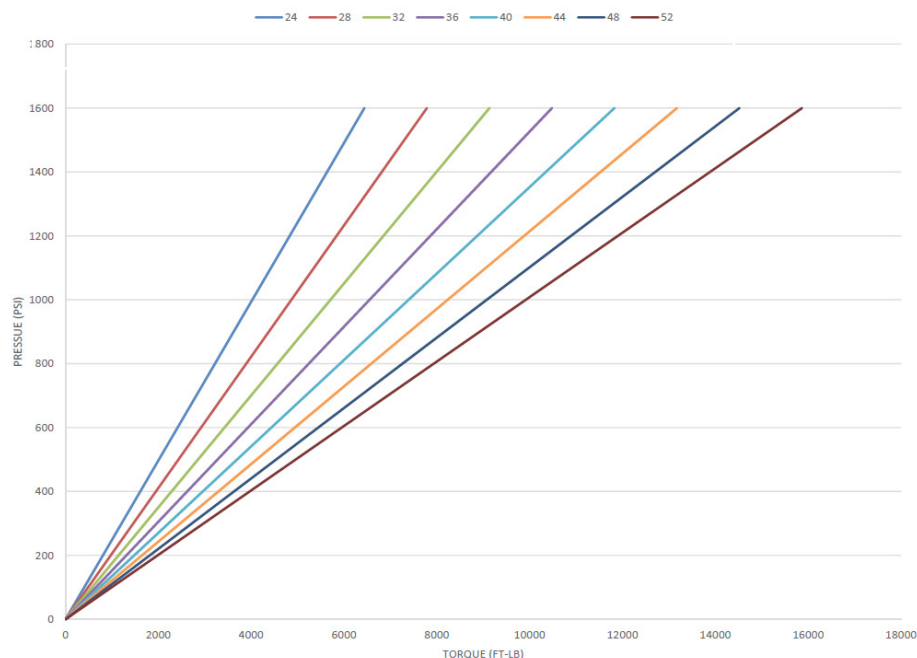
### A400-T400 HS Brake Caliper

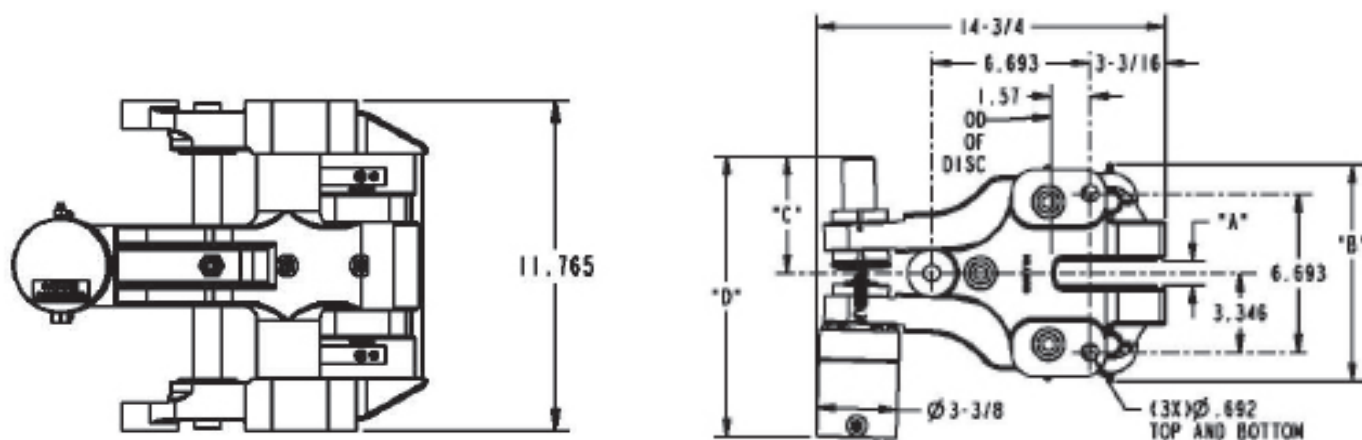
The A400 is an arm style caliper brake designed to accept a large selection of Hilliard thrusters. These thrusters include spring applied hydraulic released, spring applied pneumatic released, hydraulic applied spring released, and pneumatic applied spring released. The 400 requires a minimum disc diameter of 24" and is offered in 2 sizes to accommodate a 1" and 1-1/2" thick disc. The design of the caliper allows the user to quickly convert between right and left handed designs eliminating the need for multiple part numbers..

The HS thruster is a direct applied thruster that is hydraulically applied spring released.

*The T400 thruster produces a maximum braking force of 8081 pounds at the maximum operating pressure of 1600 psi. (This thruster is only to be used on the A400 caliper)*

A400-T400 HS





A400 CALIPER WITH T400 HS THRUSTER

Caliper Model	"A" Disc Thickness	"B"	"C"	"D"
A400-25	1"	9- 5/32"	5"	11- 7/8"
A400-40	1- 1/2"	9- 13/16"	5"	11- 15/16"

Maximum Operating Pressure: 1600 psi

Total Brake Weight: 120 lbs. (54.4 kg)

Caliper Weight: 108 bs. (49 kg) Thruster Weight: 12 lbs. (5.4 kg)

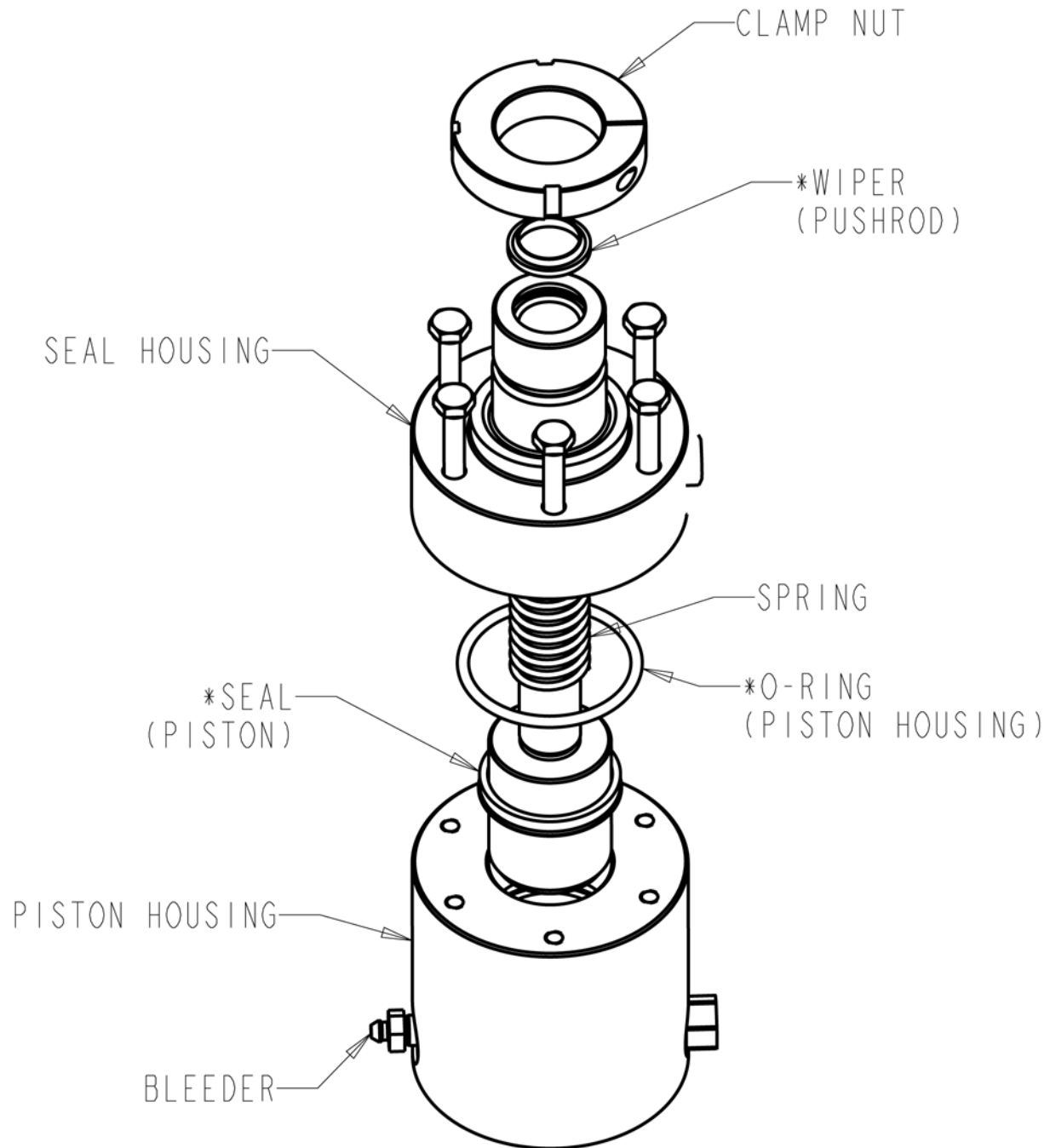
Friction Pad Area: 60.2 SQ. IN. [388.4 SQ Cm]

Oil Volume: .73 in.<sup>3</sup> at Recommended Gap Setting

Brake Path: 4.625 in (117 mm)

**Braking Torque at Maximum Operating Pressure (lb-ft) = 674 \* (Disc Radius(in)-2.44)**

## HS THRUSTER



\* RECOMMENDED SPARE PART (SEALS & O-RINGS AVAILABLE AS A KIT)

The Hilliard Corporation  
100 West 4th St.  
Elmira, NY 14902-1504 USA  
PH: 607-733-7121 FAX: 607-737-1108  
[www.hilliardbrakesystems.com](http://www.hilliardbrakesystems.com)  
[hilliard@hilliardcorp.com](mailto:hilliard@hilliardcorp.com)



YOUR LOCAL REPRESENTATIVE:



08/18 TDS-A400-T400 HS