

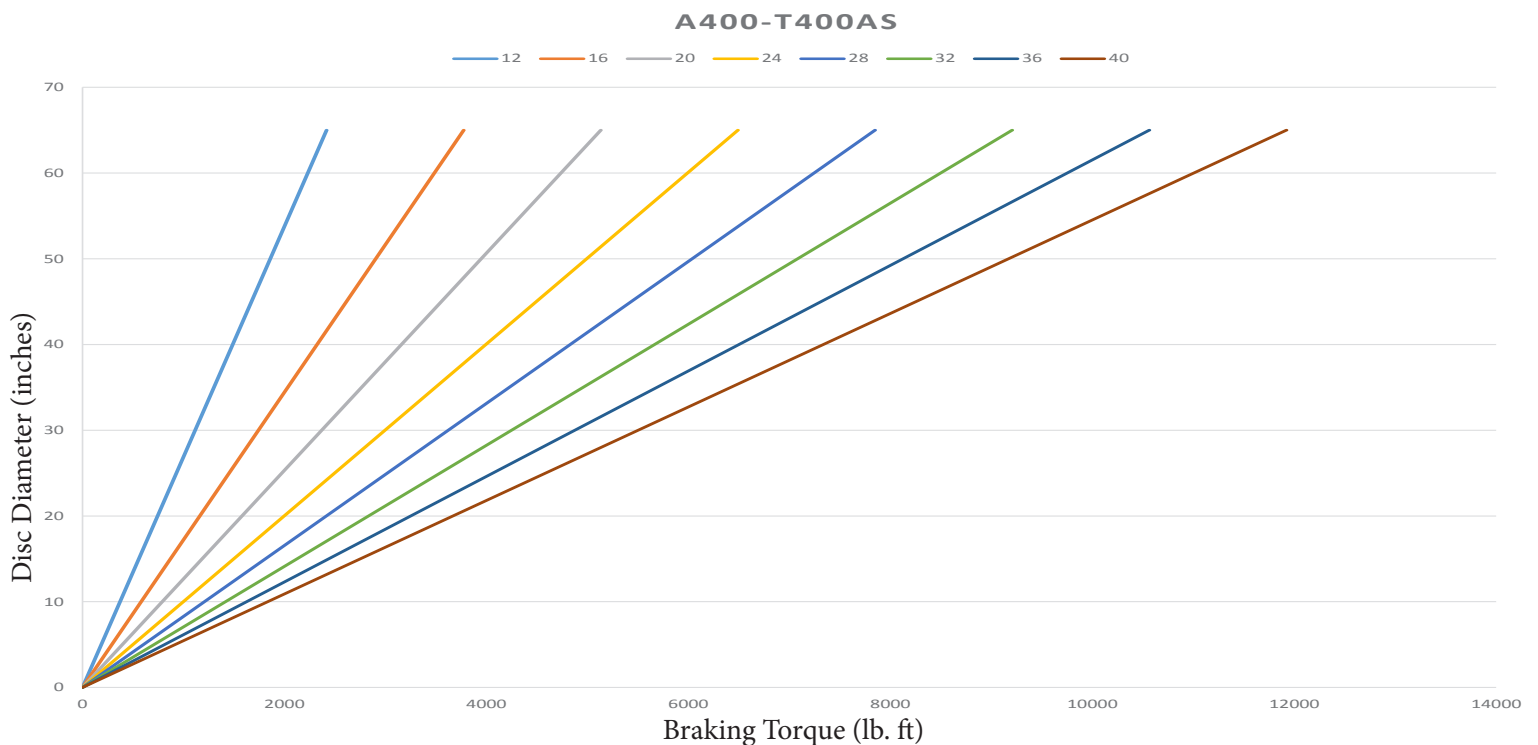
Pneumatic Applied, Spring Released Caliper Brakes

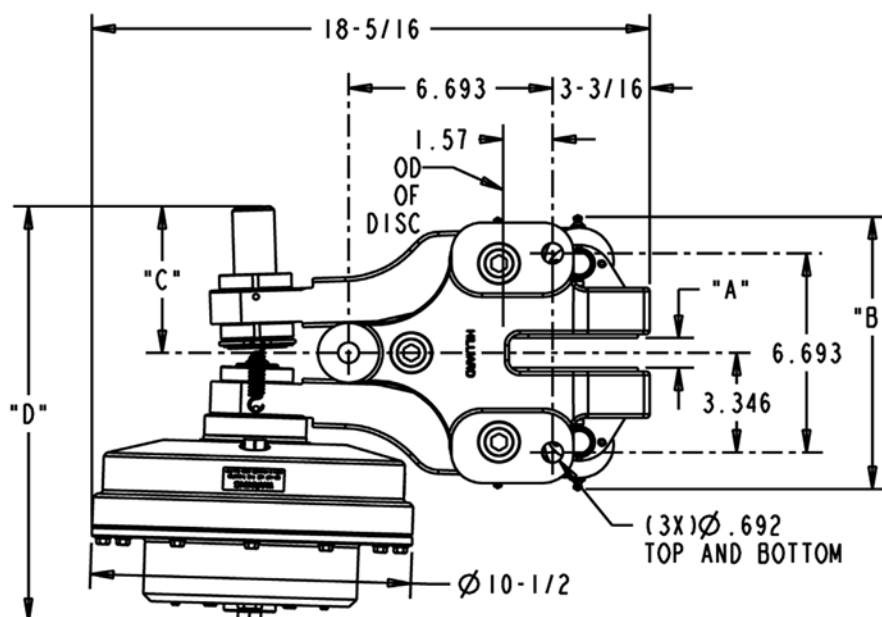
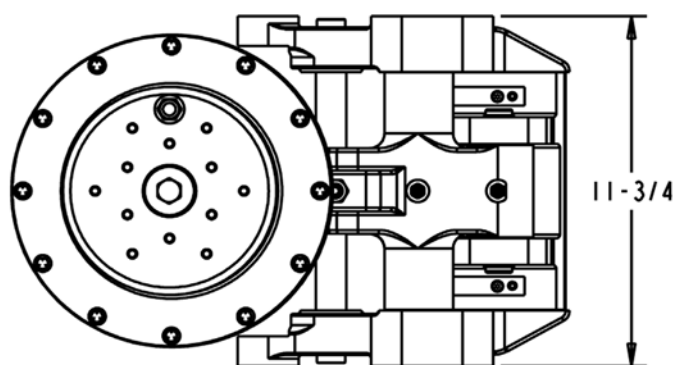
A400-T400 AS Brake Caliper

The A400 is an arm style caliper brake designed to accept a large selection of Hilliard thrusters. These thrusters include spring applied hydraulic released, spring applied pneumatic released, hydraulic applied spring released, and pneumatic applied spring released. The 400 requires a minimum disc diameter of 24" and is offered in 2 sizes to accommodate a 1" and 1-1/2" thick disc. The design of the caliper allows the user to quickly convert between right and left handed designs eliminating the need for multiple part numbers.

The AS thruster is a direct applied thruster that is pneumatically applied spring released. The Pneumatic applied thrusters are offered in multiple sizes to meet the needs of our customers.

The T400 AS thruster produces a maximum braking force of 8400 pounds at the maximum operating pressure of 67 psi. (This thruster is only to be used on the A400 caliper)





A400 CALIPER WITH T400 AS THRUSTER				
Caliper Model	“A” Disc Thickness	“B”	“C”	“D”
A400-25	1”	9- 5/32”	5”	13- 15/16”
A400-40	1- 1/2”	9- 13/16”	5”	14”

Maximum Operating Pressure: 67 psi

Total Brake Weight: 136 lbs. (61.7kg)

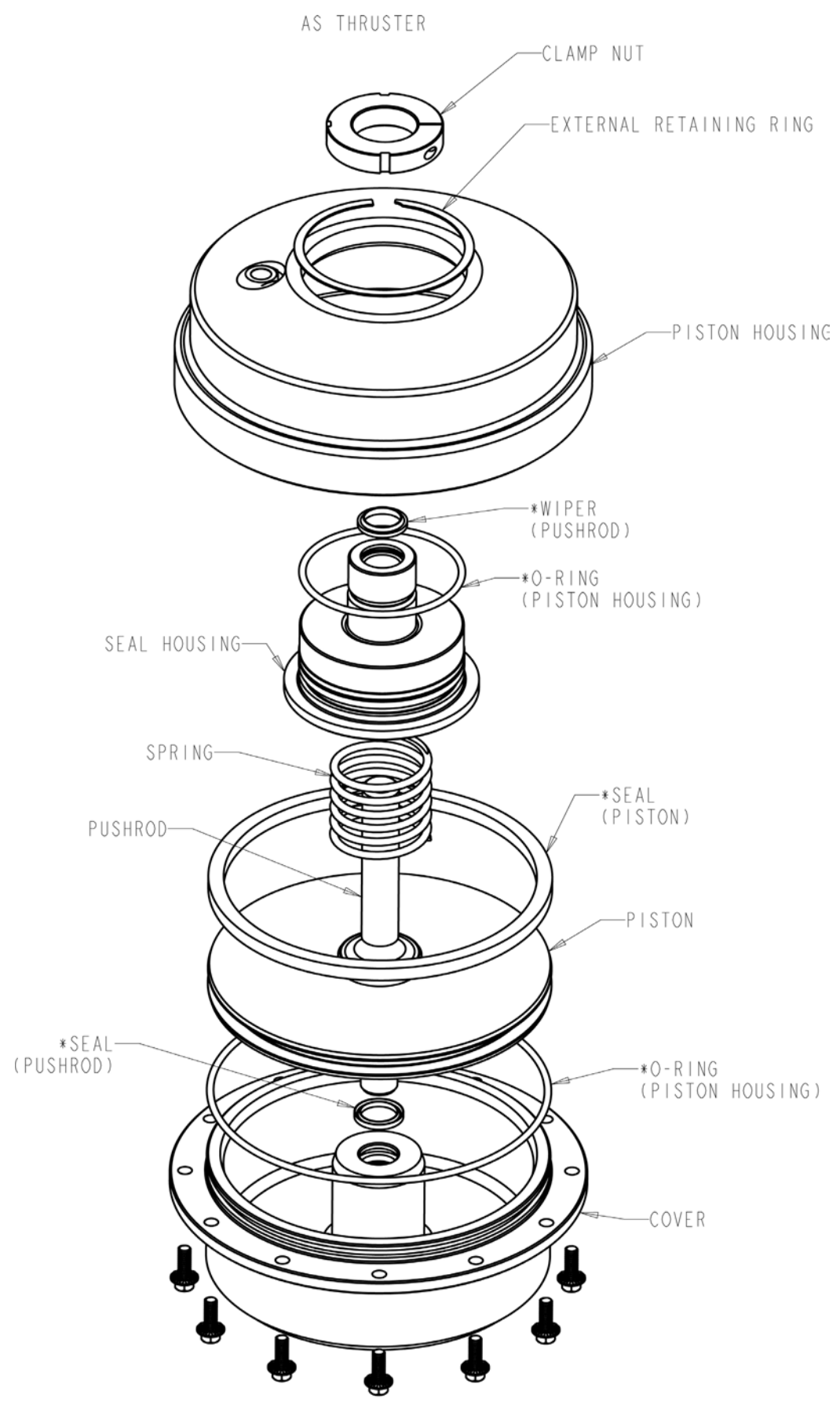
Caliper Weight: 108 lbs. (49 kg) Thruster Weight: 28 lbs. (12.7 kg)

Friction Pad Area: 60.2 SQ. IN. [388.4SQ Cm]

Air Volume: 83.1 in.³ at Recommended Gap Setting

Braking Torque at Maximum Operating Pressure (lb-ft) = 679^* (Disc Radius(in)-2.44)

AS Thruster: Pneumatically Applied / Spring Released



* RECOMMENDED SPARE PART (SEALS & O-RINGS AVAILABLE AS A KIT)

The Hilliard Corporation
100 West 4th St.
Elmira, NY 14902-1504 USA
PH: 607-733-7121 FAX: 607-737-1108
www.hilliardbrakesystems.com
hilliard@hilliardcorp.com



YOUR LOCAL REPRESENTATIVE:



08/18 TDS-A400-T400 AS